



Swiss Karate Federation (SKF)
Swiss Shotokan Karate-Do Federation (SSKF)
World Shotokan Karate Federation (WSKF)



International Swiss Junior Open 2015

International Karate Competition for the youth



Sports Centre Pfaffenholz Basel

Sunday, March 29 2015

Admission: free

Participation allowed till age of 21

INDIVIDUAL - KATA (Girls & Boys)

according age and level

INDIVIDUAL - KUMITE (Girls & Boys)

according age, weight and level

TEAM-KATA (mixed)

Registration on www.sportdata.org

Organisators: Karateclub Laufenburg
Karateclub Rheinfelden

www.karate-laufenburg.ch
www.karateclub-rheinfelden.ch



Swiss Karate Federation (SKF)
Swiss Shotokan Karate-Do Federation (SSKF)
World Shotokan Karate Federation (WSKF)



International Swiss Junior Open 2015

Sports Center Pfaffenholz Basel

Sunday, March 29 2015

Admission: free

Participation allowed till age of 21

INDIVIDUAL - KATA (Girls & Boys)

according age and level

INDIVIDUAL - KUMITE (Girls & Boys)

according age, weight and level

TEAM-KATA (mixed)

Registration on www.sportdata.org

Organisator:

Karateclub Laufenburg

www.karate-laufenburg.ch

Karateclub Rheinfelden

www.karateclub-rheinfelden.ch

Contact:

Philipp Spaniol: p.spaniol@auto-interleasing.ch, +41 (0)79 253 85 72

Sahin Sensei: sahin_karatedo@gmx.ch, +41 (0)79 423 50 14



Swiss Karate Federation (SKF)
Swiss Shotokan Karate-Do Federation (SSKF)
World Shotokan Karate Federation (WSKF)



Registration on www.sportdata.org

The registration needs to include following information:

- Online registration of the athletes on www.sportdata.org
- Name of official Coach
- Name of Referee
- Name of official representative (maximal 2 people, e.g. 1 president of the association, 1 technical director)
- Name of photographer & press (maximal 2 people, 1 photographer, 1 press)

Only companions with a valid and official coach-card, press-card, photographer card are allowed to enter the hall. All other companions & spectators may only accede the grandstand & must not enter the hall (tatami area). Spare cards will not be distributed on the tournament day.

Registration deadline

Sunday, March 22 2015 at 24:00

Online registration of athletes, coaches, referees & other official participants on www.sportdata.org.

Registrations after the deadline will not be considered !

Drawing

Wednesday, March 25, 2015 after 18:00

Payment of the registration fee in CHF for Swiss clubs or schools and in Euro for clubs and schools from abroad

CHF 20.— Children	18 Euro Children
CHF 30.— Team	27 Euro Team

Bank Connection:

IBAN CH800029229210720240Z (Derya SAHIN, 4058 Basel)

BIC/SWIFT Code UBS Basel: UBSWCHZH40M

Advice of payment: Swiss Junior Open 2015

The registration fees need to be payed according to the registrations on www.sportdata.org until Tuesday 24 of March on bank account.

If payment is not performed according to the deadline (24 of March), registrations will be cancelled.

Refund only with a personal medical certificate!

Rules

According to the rules of WKF & Swiss Karate Federation (SKF) with small adjustments (www.karate.ch).

Liability

Insurance is the participant's own responsibility. The organizer, SKF and SSKF exclude any form of liability whatsoever. With the registration the participant & the Dojo-director confirm the physical and psychic health of the participant as well as the participation in the tournament without any difficulty as regards health.

Participation

The simultaneous participation in two or more categories within Kata or Kumite is not permitted. The exceptions are mentioned in the categories.

Coach

Only companions with a valid and official Coach-card are allowed to enter the hall. All other companions & spectators may only accede the grandstand & must not enter the hall (tatami area).



Swiss Karate Federation (SKF)
Swiss Shotokan Karate-Do Federation (SSKF)
World Shotokan Karate Federation (WSKF)



Each club will get one Coach-card per 5 competitors (**max. 6 coaches per club**) (1 coach per Tatami).

The Coach-cards will be distributed at the team-registration desk on the tournament day according to the registration on www.sportdata.org.

Dresscode: Karate-Gi or sportsdress!

Equipment

White Karate-Gi (an emblem of the club on the left side is permitted). Bandages need to be approved from the national referee committee. Contact lenses at one's own risk. Eyeglasses are forbidden in all Kumite categories!

Obligatory for Kumite :

- Red and blue belt
- Official red and blue fist protection
- Official red and blue foot protection
- Dental protection
- Cup for male participants
- Chest protector for female participants
- Cadets, Juniors, Seniors: official red and blue shin guard

Recommended for Kumite :

- Body protection for all athletes

Permitted for Kumite :

- Children: Shin guard permitted (red, blue and white)

Responsible referee

Commission of referees

Referees

Each referee must be registered on www.sportdata.org **with his level !!** (international, national A, B, C, Beginner). Apart of meals (Turkish specialties) following indemnity will be applied:

International & National A:	CHF 150.00
National B:	CHF 100.00
National C:	CHF 80.00
Beginner:	CHF 40.00

Penalties

The organizer can expel athletes, coaches, companions and spectators from the sports hall if they do not follow the directions and guidance of the organizing committee or the security staff. In the case of threats and/or assaults the organizing committee claims the right to call the official law enforcement agencies.

Protest

Protests have to be justified and handed in to the National Referee Committee in written form. At the same time a deposit of CHF 200.- needs to be left. Should the protest be approved, the amount will be refunded.

Penalty Points

Techniques with contact or insufficient control are punished with penalty points (Hansoku –8 points, Chui –3 points). A score of 11 penalty points (category 1) results in a disqualification of all Kumite categories.

Report forms document the fights and are under the surveillance of the responsible Tatami referee. Athletes who win twice as a result of Hansoku are disqualified.

Award ceremony



Swiss Karate Federation (SKF)
Swiss Shotokan Karate-Do Federation (SSKF)
World Shotokan Karate Federation (WSKF)



Should a medal winner be prevented to attend the award ceremony he or his coach needs to ask the National Referee Committee for approval. The National Referee Committee decides whether the given reason is adequate. At the award ceremony the competitor should dress a karate-gi or a sports dress. By non-compliance the position is denied.

Photographer

Photographers need an official authorization from the organizer (for the tatami area). They should not disturb the course of the tournament.



Swiss Karate Federation (SKF)
 Swiss Shotokan Karate-Do Federation (SSKF)
 World Shotokan Karate Federation (WSKF)



KATA Categories 10, 12, 14, 17, 21

Essential is the BIRTHDAY !

Should there be less than 4 athletes in one category, they will automatically be classed in the next higher category of the same age. Is the category already the highest category, then the athletes will automatically be classed in the next lower category.

Each winner is obligated to inform the responsible tournament table immediately after each round.

INDIVIDUAL-KATA

Categorie	Sex	Level	Age
KATA10	Girls	8. - 6. Kyu	7 -10
	Boys	8. - 6. Kyu	7 -10
	Girls	From 5. Kyu	7 -10
	Boys	From 5. Kyu	7 -10
KATA12	Girls	8. - 6. Kyu	11-12
	Boys	8. - 6. Kyu	11-12
	Girls	Ab 5. Kyu	11-12
	Boys	Ab 5. Kyu	11-12
KATA14	Girls	8. - 6. Kyu	13-14
	Boys	8. - 6. Kyu	13-14
	Girls	From 5. Kyu	13-14
	Boys	From 5. Kyu	13-14
KATA17	Girls	8. - 6. Kyu	15-17
	Boys	8. - 6. Kyu	15-17
	Girls	From 5. Kyu	15-17
	Boys	From 5. Kyu	15-17
KATA21	Girls	8. - 6. Kyu	18-21
	Boys	8. - 6. Kyu	18-21
	Girls	From 5. Kyu	18-21
	Boys	From 5. Kyu	18-21

Minimum Level: Yellow belt (8. Kyu)

Shobu System, Consolation round with Montreal-System.

Qualifying round and Final with flag-system.

In each round a different Kata has to be shown. At least two katas have to be shown up to 4th Kyu, from the 3rd Kyu onwards, there must be at least three different Katas. The Kata which was shown in a precedent round cannot be repeated, i.e.: Round 1 Kata 1, round 2 Kata 2, round 3 Kata 3; in round 4 there can be shown a different Kata, Kata 1 or Kata 2 but not Kata 3

Tokui-Kata according to the WKF list enlarged with :
 Heian, Pinan, Geki-Sai-Ichi, Geki-Sai Ni (no Shitei-Kata-rounds).



Swiss Karate Federation (SKF)
 Swiss Shotokan Karate-Do Federation (SSKF)
 World Shotokan Karate Federation (WSKF)



During the qualifying round the athletes present their Katas at the same time.

During the qualifying round the athletes present a Tokui-Kata at the same time. Only during the finals the athletes present their Kata one after another.

The simultaneous participation in two or more categories is not permitted.

KATATEAM Categories 10, 14, 21

Essential is the BIRTHDAY!

Should there be less than 4 athletes in one category, they will automatically be classed in the next higher category of the same age. Is the category already the highest category, then the athletes will automatically be classed in the next lower category.

Each winner team is obligated to inform the responsible tournament table immediately after each round.

TEAM-KATA

Category	Sex	Level	Age
KATATEAM10	mixed	From 8. Kyu	8 -10
KATATEAM 14	mixed	From 8. Kyu	11-14
KATATEAM 21	mixed	From 8. Kyu	15-21

Minimum Level: Yellow belt (8. Kyu)

Shobu System, Consolation round with Montreal-System.

Qualifying round and Final with flag-system.

In each round a different Kata has to be shown. At least two Katas have to be shown. In the category KATATEAM21, at the final, there has to be shown the Katas and the corresponding Bunkai.



Swiss Karate Federation (SKF)
 Swiss Shotokan Karate-Do Federation (SSKF)
 World Shotokan Karate Federation (WSKF)



KUMITE Categories 12, 14, 16, 21

Essential is the BIRTHDAY!

The weight categories will be determined according to the inscriptions. The divisions will be made equally over the corresponding category. **Therefore the exact bodyweight has to be entered upon registration on www.sportdata.org.** Athletes which have no body weight entered will start in the heavyweight categories

NEW: Weighing next to the Tatami. Every child will be weighted before the category starts. If the weight tolerance of +/- 3000 gr. is exceeded the athlete will be excluded from the competition.

KUMITE

Categorie	Sex	Level	Age
KUMITE10	Girls	From 6. Kyu	8-9
	Boys	From 6. Kyu	8-9
KUMITE12	Girls	From 6. Kyu	10-12
	Boys	From 6. Kyu	10-12
KUMITE14	Girls	From 6. Kyu	13-14
	Boys	From 6. Kyu	13-14
KUMITE16	Girls	From 6. Kyu	15-16
	Boys	From 6. Kyu	15-16
KUMITE21	Girls	From 6. Kyu	17-21
	Boys	From 6. Kyu	17-21

Minimum Level: Green belt (6. Kyu)

Rules SKF with following adaptations :

Shobu System, Trostrunde im Montreal-System.

Fight time:

KUMITE10, KUMITE12 und KUMITE14 1 ½ minutes effective, finale 1 ½ minutes effective

KUMITE16 2 minutes effective, finale 2 minutes effective

KUMITE21 2 minutes effective, finale 3 minutes effective

Head (Jodan):

Touch is not permitted (fist and foot techniques).

Belly / Back (Chudan):

Light touch of the Karategi is permitted but no contact with the body.

PROTECTION: red and blue fist protection, foot protection, dental protection and cup for male participants obligatory (shin guard permitted)

The simultaneous participation in two or more categories is not permitted.



Swiss Karate Federation (SKF)
Swiss Shotokan Karate-Do Federation (SSKF)
World Shotokan Karate Federation (WSKF)

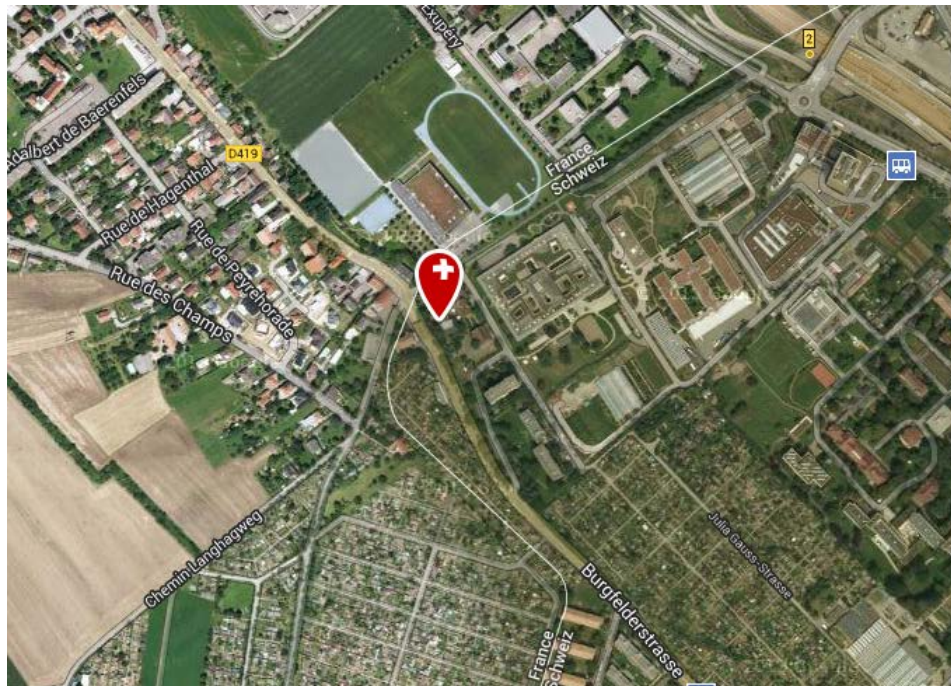


Time Schedule International Swiss Junior Open 2015 Sunday, March 29 2015

The consolation round and final are immediately after the category

07:30 Entrance of the athletes and weight control
07:45 Briefing of the Referees and Coach-Meeting
08:15 Start of tournament
08:30 Kata Individual and Team
11:30 Award ceremony Kata Individual and Team
12:00 Break, weight control
13:00 Kumite
17:00 Award ceremony

Venue: Sports Centre Pfaffenholz



Burgfelderhof 60B
4055 Basel

Subject to small modifications. All information and detailed time schedules on
www.sportdata.org



Swiss Karate Federation (SKF)
Swiss Shotokan Karate-Do Federation (SSKF)
World Shotokan Karate Federation (WSKF)



WKF Kata List

<u>GOJU-RYU KATAS</u>	<u>WADO-RYU KATAS</u>
1. Sanchin	1. Kushanku
2. Saifa	2. Naihanchi
3. Seiyunchin	3. Seishan
4. Shisochin	4. Chinto
5. Sanseru	5. Passai
6. Seisan	6. Niseishi
7. Seipai	7. Rohai
8. Kururunfa	8. Wanshu
9. Suparimpei	9. Jion
10. Tensho	10. Jitte

<u>SHOTOKAN KATAS</u>	
1. Bassai-Dai	12. Jion
2. Bassai-Sho	13. Sochin
3. Kanku-Dai	14. Nijushiho Sho
4. Kanku-Sho	15. Goju Shiho-Dai
5. Tekki - Shodan	16. Goju Shiho-Sho
6. Tekki - Nidan	17. Chinte
7. Tekki - Sandan	18. Unsu
8. Hangetsu	19. Meikyo
9. Jitte	20. Wankan
10. Enpi	21. Jiin
11. Gankaku	



Swiss Karate Federation (SKF)
Swiss Shotokan Karate-Do Federation (SSKF)
World Shotokan Karate Federation (WSKF)



<u>SHITO-RYU KATAS</u>	
1. Jitte	22. Naifanchin Shodan
2. Jion	23. Naifanchin Nidan
3. Jiin	24. Naifanchin Sandan
4. Matsukaze	25. Aoyagi (Seiryu)
5. Wanshu	26. Jyuroku
6. Rohai	27. Nipaipo
7. Bassai Dai	28. Sanchin
8. Bassai Sho	29. Tensho
9. Tomari Bassai	30. Seipai
10. Matsumura Bassai	31. Sanseiru
11. Kosokun Dai	32. Saifa
12. Kosokun Sho	33. Shisochin
13. Kosokun Shiho	34. Kururunfa
14. Chinto	35. Suparimpei
15. Chinte	36. Hakucho
16. Seienchin	37. Pachu
17. Sochin	38. Heiku
18. Niseishi	39. Paiku
19. Gojushiho	40. Annan
20. Unshu	41. Annanko
21. Seisan	42. Papuren
	43. Chatanyara Kushanku